



VON DUPRIN

AX exit devices

Featuring the 98/99,
33/35A and 22 Series
devices

The exit device that
requires only 5 lbs. of force
to operate

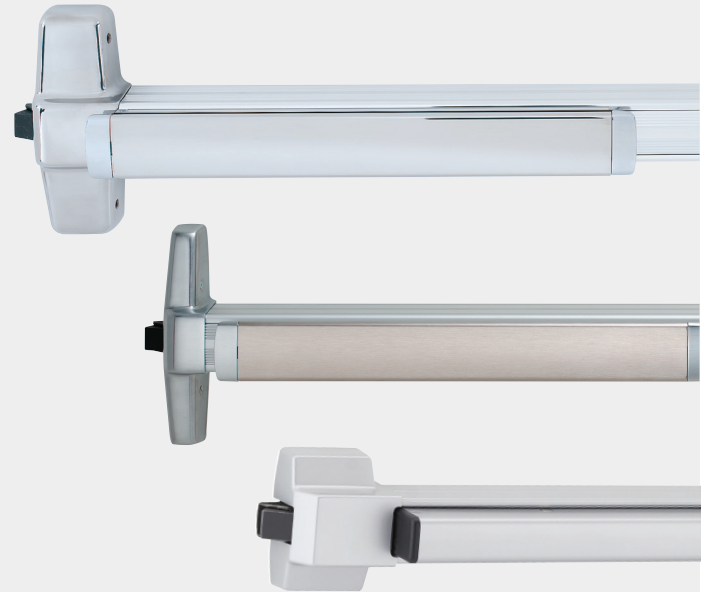
The Von Duprin AX device was born out of a need to provide the market with a solution that meets recent California Building Code enhancements. Beginning in January 2014, the California Building Code (Chapter 11B-309.4) established a 5 lb. maximum force of operable parts on doors and gates.

Since pioneering the first exit device in 1908, Von Duprin life safety products have provided unparalleled quality, performance and flexibility for schools, hospitals, stadiums and public buildings. These products come with the support and customer care only offered by Von Duprin. Providing the confidence and peace of mind at critical moments of life safety.

AX device specification requirements

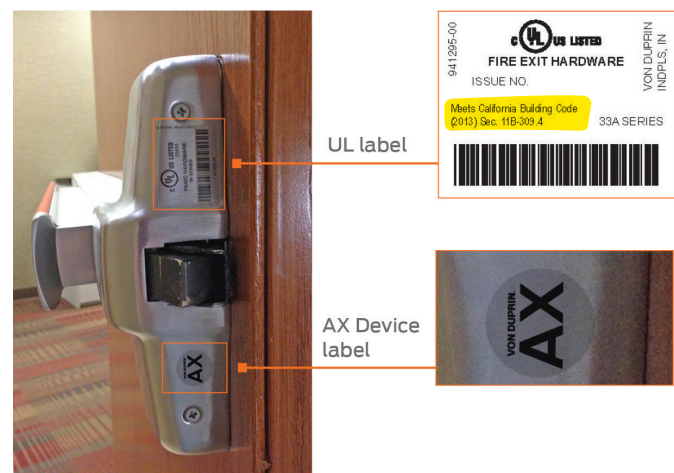
Provide exit devices tested to ANSI/BHMA A156.3 Grade 1, [OPTION for specific compliant products/applications: UL certified to meet maximum 5 pound requirements according to the California Building Code section 11B-309.4,] and UL listed for Panic Exit or Fire Exit Hardware.

Contact Allegion today at 888.925.4359
or www.allegion.com/us to learn how the AX device
can help you provide accessibility without compromise.



How to identify the Von Duprin AX device

1. Look for the "AX" Prefix in the door schedule and/ or specification.
2. In the field, look for the California Compliance note on the UL Label and the AX Device Label. Both labels can be found on the center case cover of the exit device as shown below.



AX98/99 Series Specifications

| | |
|---|--|
| Device types | AX98/99 - Rim AX98/9949 LBL & LBL-AFL - Concealed Vertical Cable Less Bottom Latch |
| Device functions | EO, DT, NL, L, LBE, LDT, LNL |
| Device lengths | 3' 4' |
| Rating | Panic and Fire |
| Electric options | LX - Latchbolt monitor switch LXLC - Latchbolt monitor switch low current LXRX - Latchbolt pushpad monitor LXRXLC - Latchbolt pushpad monitor low current RX - Pushpad monitor switch RXLC - Pushpad monitor switch low current RX2 - Double pushpad monitor switch ALK - Alarm kit SS - Signal switch |
| Mechanical options | GBK - Glass bead kit -2 - Double cylinder SNB - Sex bolts SEC - Security screws WP - Weep holes |
| Dogging options (Panic device only) | Hex key dogging = Standard CD - Cylinder dogging DI - Dogging indicator LD - Less dogging SD - Special dogging |

AX33/35A Series Specifications

| | |
|---|--|
| Device types | AX33/35A - Rim AX33/3549 LBL & LBL-AFL - Concealed Vertical Cable Less Bottom Latch |
| Device functions | EO, DT, NL, L, LBE, LDT |
| Device lengths | 3' 4' |
| Rating | Panic and Fire (3349 LBL/AFL only) |
| Electric options | LX - Latchbolt monitor switch LXLC - Latchbolt monitor switch low current LXRX - Latchbolt pushpad monitor LXRXLC - Latchbolt pushpad monitor low current RX - Pushpad monitor switch RXLC - Pushpad monitor switch low current RX2 - Double pushpad monitor switch ALK - Alarm kit SS - Signal switch |
| Mechanical options | GBK - Glass bead kit SEC - Security screws WP - Weep holes |
| Dogging options (Panic device only) | Hex key dogging = Standard CD - Cylinder dogging LD - Less dogging |

AX22 Series Specifications

| | |
|---|--|
| Device types | AX22 - Rim |
| Device functions | EO, DT, NL, L, LBE |
| Device lengths | 3' 4' |
| Rating | Panic and Fire |
| Electric options | LX - Latchbolt monitor switch RX - Pushpad monitor switch RX2 - Double pushpad monitor switch ALK - Alarm kit |
| Mechanical options | GBK - Glass bead kit |
| Dogging options (Panic device only) | Hex key dogging = Standard LD - Less dogging |

Ordering information

| | | | | | | | | | | | | | | | | | | | | | | |
|---------------|---|---------------|---|--------------------|---|-----------------|---|---------------|---|---------------|---|---------------|---|-------------------|---|----------------|---|-------------|---|--------------------|---|--------------------|
| AX | - | 98 | - | | - | L | - | F | - | -2 | - | US26D | - | 3' | - | RHR | - | 996L | - | 06 | - | SNB |
| Prefix | | Series | | Device type | | Function | | Rating | | Suffix | | Finish | | Door Width | | Handing | | Trim | | Lever Style | | Accessories |
| 1 | | 2 | | 3 | | 4 | | 5 | | 6 | | 7 | | 8 | | 9 | | 10 | | 11 | | 12 |

Selections correspond with the numbers above. See price book for specific configuration options.

| | |
|--|---------------------------------------|
| 1 Prefix | |
| AX* | Accessible Device |
| LX | Latchbolt Monitor Switch |
| LXLC | Latchbolt Monitor Switch Low Current |
| LXRX | Latchbolt Pushpad Monitor |
| LXRXLC | Latchbolt Pushpad Monitor Low Current |
| RX | Pushpad Monitor Switch |
| RXLC | Pushpad Monitor Switch Low Current |
| RX2 | Double Pushpad Monitor Switch |
| SS | Signal Switch |
| *Must be specified; may select more than one prefix. | |
| 2 Series | |
| 98 | Series 98 - smooth |
| 99 | Series 99 - grooved |
| 33A | Series 33A - grooved |
| 35A | Series 35A - smooth |
| 22 | Series 22 |
| 3 Device Type | |
| N/A | Rim |
| 49 | Concealed Vertical Cable |

| | |
|-----------------------------------|---------------------------------|
| 4 Function | |
| EO | Exit Only |
| DT | Dummy Trim |
| NL | Night Latch |
| L | Lever |
| LBE | Lever - Blank Escutcheon |
| LDT | Lever, Rigid - Dummy Trim |
| LNL | Lever, Rigid - Night Latch |
| 5 Rating | |
| N/A | Panic |
| F | Fire-rated |
| 6 Suffix | |
| -2 | Double Cylinder |
| LBL | Less Bottom Latch |
| LBL-AFL | Less Bottom Latch with Fire Pin |
| WH | Weep Holes |
| 7 Finish | |
| See pricebook for finish offering | |

| | |
|---|--------------------|
| 8 Door Width | |
| 3' | Standard Default |
| 4' | |
| 9 Handing | |
| RHR | Right Hand Reverse |
| LHR | Left Hand Reverse |
| 10 Trim | |
| See pricebook for trim/control offering | |
| 11 Lever Style | |
| See pricebook for lever style offering | |
| 12 Accessories | |
| ALK | Alarm Kit |
| GBK | Glass Bead Kit |
| SNB | Sex Bolts |

Contact Allegion today to learn how the AX device can help you provide the light touch for complete accessibility.
888.925.4359 or www.allegion.com/us



© 2014 Allegion
010333, Rev. 4/14
allegion.com/us